

CATania 30 Unterputzprofil

- Profil mit kaum sichtbarer Aluminiumkante im eingebauten Zustand
- geriffelte Flügel für besseren Halt des Putzes
- Netzteil mit der Abmessung 30 x 22 mm (60 W und 100 W) kann in das CATania 30-Unterputzprofil für Netzteileinbau (6239412#) integriert werden
- mit Einleger Profil sind LEDs auch über dem Netzteil betreibbar (schattenfreie Ausleuchtung)
- alle CATania 30-Abdeckungen und -Einleger können montiert werden
- mit Halteclips kann alternativ ein BARdolino T-Profil montiert werden
- in Kombination mit dem CATania 30 TB-Profil von Wand auf Decke übergehende, durchgängige Lichtlinie möglich

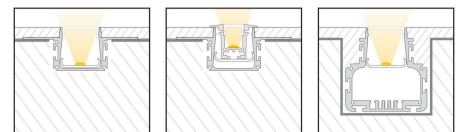
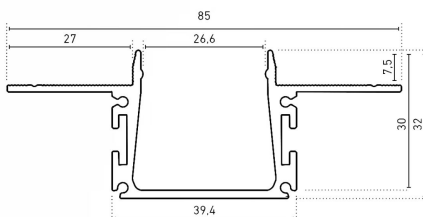


Please refer to the notes on expansion and assembly at the end of the data sheet!

ALUMINIUM PROFILE

	62394311
Description	CATania 30 in-wall profile, Aluminium mill finish, 1m
Length	1000 mm
Width	85 mm
Height	32 mm
Colour	aluminium
Material	Aluminium EN AW 6060
Finish	nut treated
Weight	740 gr
Remarks	We recommend the use of gypsum plaster for assembly. With lime cement plaster, optical impairments of the aluminium can occur.

For other lengths please replace the last digit of the article number by: 2 = 2.01m / 3 = 3.02m / 5 = 5.03m



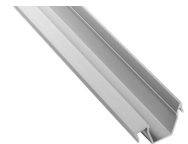
	62394321	62394322
Description	CATania 30 in-wall profile for power supply integration, aluminum, mill finish, 1m	CATania 30 in-wall profile for power supply integration, aluminum, mill finish, 2,01m
Length	1000 mm	2010 mm
Width	60 mm	
Height	62 mm	
Colour	aluminium	
Material	Aluminium EN AW 6060	
Finish	nut treated	
Weight	1761 gr	3522 gr
Remarks	We recommend the use of gypsum plaster for assembly. With lime cement plaster, optical impairments of the aluminium can occur.	



INLAY

	62394131	62398841
Description	CATania 30 insert for in-wall profile, aluminum, mill finish, 1m	CATania insert profile, asymmetrical, for mounting the LEDlight flex family, combinable with GARTiano covers, light deflection 14°
Material	Aluminium EN AW 6060	
Finish	nut treated	anodised
Colour	aluminium	
Length	1000 mm	
Width	30,3 mm	27,4 mm
Height	7 mm	17,91 mm

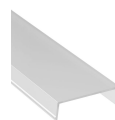
For other lengths please replace the last digit of the article number by: 2 = 2.01m / 3 = 3.02m / 5 = 5.03m



COVER

	62398851	62399821	62399851	62399861	62399871
Description	anodised aluminium cover	Diffuser opal, for a homogenous and glare-free light distribution	Diffuser satined, little light consumption and hiding technical view at the same time	Diffuser clear, for maximum light yield and protection of the LED strip	prisma cover to reduce the dazzling effect
Material	aluminium	PMMA			
Version	aluminium	opal white	satined	clear	prisma
Transmission in %	0	77	84	91	
Length	1000 mm				
Width	27,4 mm				
Height	7,9 mm				

For other lengths please replace the last digit of the article number by: 2 = 2.01m / 3 = 3.02m / 5 = 5.03m



END CAPS

	62394141
Description	End cap CATania 30 in-wall profile, 2x end caps, aluminium, raw, incl. 12 screws
Material	Aluminium EN AW 5052
Colour	aluminium
Length	1,5 mm
Width	39,4 mm
Height	31,7 mm

Note: The screws for the end caps must be placed and screwed in at a right angle (90°) to the screw channel and may only be screwed in with a max. tightening torque of 0.35 Nm to prevent the screw head from unscrewing or the screw from overtightening (recommended bit PH1).



ACCESSORIES

	62398802	62398803	62398806	62398807
Description	2x straight connectors, metal, incl. 8 grub screws	2x connectors, 90° angle, metal, incl. 8 grub screws	profile connector set adjustable, 304 stainless steel, 2 pieces, incl. grub screws, for an angled light line	Profilverbinder-Set einstellbar, V2A-Edelstahl, 1 Stück, inkl. Madenschrauben, für eine abbiegende Lichtlinie
Material	304 stainless steel			
Finish	nut treated			
Colour	silbergrau			
Length	80 mm	50,5 mm	104 mm	
Width	10,5 mm	50,5 mm	10,5 mm	
Height	1,7 mm		7 mm	10 mm
Remarks				for an angled light line

	62394143	62394148
Description	Retaining springs CATania 30 in-wall profile, 304 stainless steel, 2 pcs.	Foam insert for CATania 30 in-wall profile
Material	304 stainless steel	Polyurethan
Finish	nut treated	
Colour	edelstahl	anthrazit
Length	28 mm	1000 mm
Width	7,8 mm	29 mm
Height	12 mm	29 mm
Remarks	Assembly aid BARdolino T, 2x retaining springs, 304 stainless steel, incl. 2 mounting plates and 2 screws	foam insert, anthracite, reusable, to be inserted into the flush-mounted profile before plastering, as a flush finish to the upper profile edge



All aluminium profiles and covers are subject to certain length tolerances. This is +20/-0 mm irrespective of the length, i.e. a profile has at least the specified length, but can be up to 20 mm longer.

If you require an exact length, please specify this when ordering (article number 62397000).

The CATania 30 UP was designed for plaster thicknesses of 7.5 mm. With commercially available spacers, however, the profile can be balanced/supported and the missing mm can be compensated for a higher plaster thickness, making it also suitable for plaster thicknesses >7.5 mm.

Please note that the materials aluminum and PMMA can expand when the temperature changes vary greatly. With a temperature change of 20°C the expansion difference can be up to 1.2 mm per meter! This is no deficiency of the product but a normal physical process.

Installation note: If you directly install two aluminum insert profiles edge to edge, please pay attention during installation, that you don't glue the LED strip directly over the joint, since the profiles at temperature fluctuations - especially at large lengths - will expand/contract (s. section 1) and then the LED tape may be damaged. At joints the LED strip has to be cut at the marked positions and reconnected with flexible solder bridges with corresponding expansion reserve (min. 5mm).

Tolerances: Width ±0.7 mm / Height ±1.0 mm

NOTES

Press marks or slight scratches on profiles are production-related and do not constitute a defect.

Loose, wipeable impurities may appear on the aluminum and plastic profiles. This is due to the production and its handling and does not represent a defect. We generally recommend cleaning the profiles with a soft, lint-free cloth (if necessary with a little clear water) before installation. The LED bonding surface must also be free of grease to ensure good adhesion of the LED strip. Corresponding information can be found in the instructions for the LED strips.

Before plastering, we recommend installing a short piece of cover (e.g. Art. C0549) approx. every 80 cm. This makes it easier to insert the final cover later.

The adhesion of our LEDlight flex strips to the profiles we offer and their different surfaces has been tested and can be ensured if the processing instructions are followed. If there are adhesion problems between LED strips and aluminum profiles, we recommend pre-treatment with the adhesion promoter "3M™ Tape Primer 94".

The guarantee period for the product is 5 years and begins on the day of shipment. Reference is the date of the delivery bill. The guarantee period may differ for accessories.